

Think **SMART!**
Act **COOL!**



Reduce Global Warming

Learn about the impacts of global warming on the planet from educators, businesses, environmental groups, and scientists.

Share this information at home, at work, at school, at your place of worship, and with others in your community.

Save energy, money, and emissions by switching to energy efficient appliances, heating, and cooling equipment.

Choose *green* power, good insulation, public transportation, local food, and other climate-friendly solutions.

Reduce waste by recycling, re-using, and composting.

Act to improve community transportation planning, design, tree planting, farmers markets, recycling programs, and other programs that reduce greenhouse gases.

Commit to work with the local media, government agencies, and elected officials on energy improvements and education about solutions to global warming.

Engage your family, friends, and neighbors in supporting programs, policies, and businesses that will "green" the future.

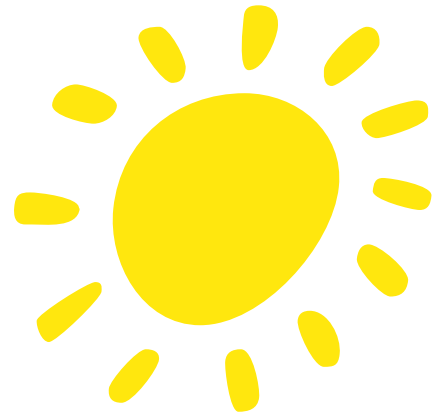
Support efforts to measure and report positive changes.

Vote for those who will work towards these solutions.

Additional resources available at

www.climatecrisis.net/action1.html
www.ucsusa.org/global_warming/solutions/what-you-can-do-about-global-warming.html
www.climatesolutions.org/pages/15%20things.htm
www.worldwildlife.org/climate/involved/individuals.cfm
www.pewclimate.org/policy_center/policy_reports_and_analysis/state/index.cfm
www.ase.org/section/_audience/educators/
www.iclei.org/index.php?id=2260

Publication: CONCERN, Inc. concern@igc.org ♦ Design: Editype, Inc. editype@editype.com
For more information and resources: www.sustainable.org ♦ Copyright © 2006 Concern, Inc.



Action Steps

From the easy to the ambitious, there are numerous actions you can take to reduce your energy consumption and fight global warming. By taking any of the following actions, you are helping to clean up our atmosphere.

| Action | CO2 reduction (lbs/yr) |
|---|------------------------|
| Use a push mower instead of a power mower | 80 |
| Clean or replace air-conditioning filters as advised | 175 |
| Run your dishwasher only when it's full using the energy-saving setting | 200 |
| Buy products packaged in reusable or recyclable containers | 230 |
| Install low-flow shower heads in order to use less hot water | 300 |
| Replace your current washing machine with low-energy, low-water-use machine | 440 |
| Keep your water-heater thermostat no higher than 120 degrees F | 500 |
| Don't overheat or overcool rooms. Turn thermostat up when it's hot and down when it's cold | 500 |
| Replace standard light bulbs with energy-efficient fluorescent bulbs | 500 |
| Wash laundry in warm or cold water, not hot | 500 |
| Install a solar thermal system to provide hot water | 720 |
| Recycle all of your home's waste newsprint, cardboard, glass and metal | 850 |
| For a water heater more than five years old, wrap it an insulating jacket | 1000 |
| Caulk and weathstrip around doors and windows to plug up leaks | 1000 |
| Reduce your garbage by 25% | 1000 |
| Leave your car at home two days a week (walk, bike, take public transit) | 1590 |
| Insulate walls and ceilings | 2000 |
| Get rid of old, energy inefficient appliances and replace with newer energy-efficient models | 3000 |
| Plant trees around your home; paint the roof a light color in a hot climate, and a dark color in a cold climate | 5000 |
| Replace your most frequently used car with a fuel-efficient car (rated at 32 mpg or more) | 5600 |
| When replacing windows, install energy-saving models | 10000 |

*Sources of information: World Wildlife Fund, Environmental Defense Fund, City of Portland Energy Office. Adapted from <http://yosemite.epa.gov/oar/globalwarming.nsf/content/ActionsIndividualActionSteps.html>